

Mini / Flash/Buzzer 421

**Buzzer/Flash BM Contin/pulse 24VAC/DC YE**



Part No.: 421.310.75



## MECHANICAL DATA

|                              |                             |
|------------------------------|-----------------------------|
| Width                        | 91 mm                       |
| Height                       | 101 mm                      |
| Diameter                     | 89 mm                       |
| Materials                    | PC                          |
| Dome colour                  | Yellow                      |
| Housing colour               | Black                       |
| Protection category          | IP65                        |
| Connection                   | Screw terminals             |
| cross-sectional area maximum | 1,50mm <sup>2</sup> / 16AWG |
| Cable entry                  | Membrane grommet            |
| Cable entry minimum          | d = 1 mm                    |
| Cable entry maximum          | d = 9 mm                    |
| Tension relief               | Pull-out protection         |
| Type of fixing               | Base mounting               |
| Working temperature minimum  | -20°C                       |
| Working temperature maximum  | +50°C                       |
| Weight with packaging        | 148 g                       |
| Product weight               | 117 g                       |

## ELECTRICAL DATA

|                             |                    |
|-----------------------------|--------------------|
| Operating voltage           | 24V                |
| Operating voltage type      | AC/DC              |
| Operating voltage frequency | 50Hz               |
| Operating voltage tolerance | +/- 10%            |
| Rated operational voltage   | 24 VDC             |
| Rated operational current   | 120 mA             |
| Rated inrush current        | 120 mA             |
| Protection class            | Protection class 2 |
| Pollution degree            | 3                  |

## OPTICAL DATA

|                      |                           |
|----------------------|---------------------------|
| Light source         | Xenon                     |
| Light colour         | Yellow                    |
| Optical signal image | Flash                     |
| Flash frequency      | 1 Hz                      |
| Flash output         | 1 J                       |
| Service life optical | 4 million flashes minimum |

## ACOUSTIC DATA



For additional installation and mounting information, refer to the appropriate user guide at [www.werma.com](http://www.werma.com). This printed copy is for information only and is subject to alteration.

Mini / Flash/Buzzer 421

## Buzzer/Flash BM Contin/pulse 24VAC/DC YE

|                             |                               |
|-----------------------------|-------------------------------|
| Volume (max) at 1m distance | 92,0 dB (A)                   |
| Acoustic signal image       | Continuous tone<br>Pulse tone |
| Audio frequency             | 2300 Hz                       |
| Acoustic service life       | 5,000 h minimum               |

### APPROVAL DATA

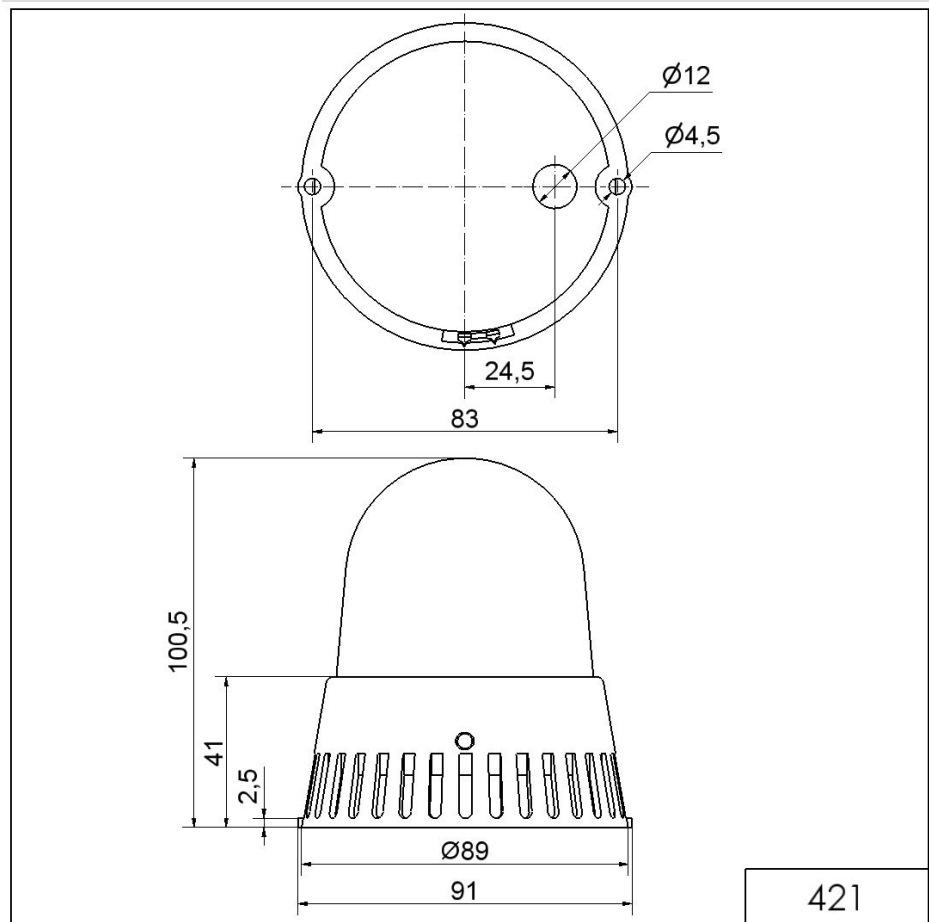
|                               |                       |
|-------------------------------|-----------------------|
| Conforms with CE              | Yes                   |
| Conforms with RoHS directive  | Yes                   |
| WEEE                          | Yes                   |
| Conforms with ATEX-directive  | No                    |
| Conforms with CCC             | No                    |
| Conforms with UL              | No                    |
| Conforms with FCC             | No                    |
| Conforms with IC              | No                    |
| EAC certificate available     | Yes                   |
| Conforms with UKCA (Importer) | Yes (WERMA (UK) Ltd.) |
| Conforms with AS-I            | No                    |
| ICAO Certification            | No                    |
| Conforms with DNV             | No                    |
| Conforms with RoHS CN         | No                    |
| Conforms with VdS             | No                    |

**!** For additional installation and mounting information, refer to the appropriate user guide at [www.werma.com](http://www.werma.com). This printed copy is for information only and is subject to alteration.

Mini / Flash/Buzzer 421

**Buzzer/Flash BM Contin/pulse 24VAC/DC YE**

**DRAWING**



For additional installation and mounting information, refer to the appropriate user guide at [www.werma.com](http://www.werma.com). This printed copy is for information only and is subject to alteration.